



Header Information		Header Information		Header Information				
1	Time Stamp	Invalid	1	Time Stamp	Invalid	1	Time Stamp	Invalid
2	Frame Counter	173373442	2	Frame Counter	173373441	2	Frame Counter	173373440
3	Flag State	0	3	Flag State	0	3	Flag State	0
4	Temperature Unit	Celsius	4	Temperature Unit	Celsius	4	Temperature Unit	Celsius
5	Chip Temperature	48,49	5	Chip Temperature	48,49	5	Chip Temperature	48,49
6	Flag Temperature	32,69	6	Flag Temperature	32,69	6	Flag Temperature	32,69
7	Box Temperature	31,61	7	Box Temperature	31,61	7	Box Temperature	31,61
8	Optics Temperature	2790	8	Optics Temperature	2790	8	Optics Temperature	2790
9	Lens Position		9	Lens Position		9	Lens Position	
Image Data		Image Data		Image Data				
10	30,1	30,1	10	30	29,9	10	30	29,9
11	30,1	29,7	11	30	29,7	11	30	29,7
12	29,7	29,8	12	29,9	29,8	12	29,9	29,8
13	29,8	29,5	13	30	29,9	13	30	29,9
14	29,8	29,7	14	29,9	29,8	14	29,9	29,8
15	29,9	29,3	15	30	29,8	15	30	29,8
16	30	29,5	16	30	29,9	16	30	29,9
17	29,8	29,6	17	29,9	29,8	17	29,9	29,8
18	30	29,9	18	30	29,7	18	30	29,7
19	29,9	29,9	19	29,9	29,9	19	29,9	29,9
20	30	30	20	30	29,8	20	30	29,8
21	29,9	30	21	30	29,9	21	30	29,9
22	30,1	30,3	22	29,9	29,9	22	29,9	29,9
23	30	29,9	23	29,9	29,7	23	29,9	29,7
24	30,3	30,4	24	30,2	30	24	30,2	30
25	30,2	30,3	25	30	30	25	30	30
26	30,2	30,4	26	30,3	30,2	26	30,3	30,2
27	30,3	30,6	27	30,2	30,3	27	30,2	30,3
28	30,3	30,8	28	30,3	30,2	28	30,3	30,2
29	30,3	30,7	29	29,9	30	29	29,9	30
30	30,3	30,6	30	30,5	30,8	30	30,5	30,8
31	30,7	30,7	31	30,7	30,5	31	30,7	30,5
32	30,6	30,6	32	30,7	30,5	32	30,7	30,5
33	30,7	30,9	33	30,6	30,5	33	30,6	30,5
34	30,8	30,8	34	30,7	30,9	34	30,7	30,9
35	30,5	30,7	35	30,8	31	35	30,8	31
36	30,5	30,7	36	30,9	30,9	36	30,9	30,9
37	30,8	30,8	37	30,8	30,9	37	30,8	30,9
38	30,8	31	38	31	30,8	38	31	30,8

RAVI File Converter

Software for Converting RAVI Files
into Spreadsheets

when temperature matters

optris RAVI File Converter

TECHNICAL DATA

Software for converting RAVI Files into Spreadsheets

Features:

- Converts hundreds of thermal image frames to MS Excel worksheets with temperature data for each pixel, time stamp and parametric data for each frame
- Works on recorded RAVI Files stored by free Optris PIX Connect Software
- Supports conversions to CSV file format
- "Skip Frame" feature allows user to select time interval for storage minimizing data overhead
- "ROI" Storage limits data storage to user identified areas defined with PIX Connect measurement area tools
- Each CSV or XLSX file includes header detail with camera serial number, emissivity, PC time stamp, ambient temperature and more

Characteristics

- The RAVI File Converter will save hours of data mining necessary to extract full image pixel temperature data from live or stored RAVI files.
- Perfect for researchers or process engineers using PI or Xi series IR cameras to gather a large data set of temperature values from stored RAVI files. Ideal for studying dynamic thermal changes on a large area of interest.

RAVI File Converter User Interface

The screenshot shows the RAVI File Converter application window. The interface includes a 'PIX Connect' status bar (Connected), a 'Preview' section with a thermal image and a temperature scale (0 to 120 °C), and an 'Output' section with fields for 'Output Folder', 'Data Filename', and 'Summary Filename'. The 'Export' section contains options for 'File Format' (CSV, XLSX), 'Decimal Separator' (Auto, Comma), 'Temperature Unit' (Celsius, Fahrenheit), 'Frame Skip' (Export Data Every, Frames), and 'AOI' (Always Save Full Frame). A 'Go!' button is visible at the bottom right. Three callouts point to specific features: 'Immediate access to stored worksheets' points to the 'Select' button in the Output Folder field; 'Storage options for CSV or MS Excel worksheet file formats' points to the 'File Format' and 'Decimal Separator' options; and 'Frame Skip option to reduce data when every frame is not critical' points to the 'Frame Skip' options.

Configuration menu of the RAVI File Converter to set the storage options for worksheets by individual needs

optris RAVI File Converter

FOR ALL OPTRIS PI AND XI SERIES IR CAMERAS



Sample Spreadsheet Data File

A	B	C	D	E	F		
Camera Information		Image 00019924					
1	Serial Number	#18052127					
2	Hardware Version Number	601					
3	Resolution	640x480					
4	AOI	-					
5	Frame Rate	32.0Hz					
6	Video Start Time	Invalid					
7	Temperature Unit	Fahrenheit					
8	Temperature Range	-4.0 .. 212.0					
9	Emissivity	1					
10	Transmissivity	1					
11	Ambient Temperature	73.4					
12	Reference Temperature	73.4					
13							
14							
Header Information							
15	Time Stamp	0001-01-01-00-10-21.375000					
16	Frame Counter	19924					
17	Flag State	0					
18	Temperature Unit	Fahrenheit					
19	Chip Temperature	98.94					
20	Flag Temperature	82.4					
21	Box Temperature	77.56					
22	Optics Temperature	32					
23	Lens Position	0					
24							
25							
Image Data							
26		75.9	76.3	76.1	76.3	76.3	75.9
27		76.1	75.6	75.7	75.9	75.9	76.3
28		75.9	75.9	75.9	76.3	76.3	75.9
29		75.7	75.9	75.9	75.9	76.1	75.9
30		75.7	75.7	75.7	76.1	76.3	76.1
31		75.7	75.9	75.7	75.7	76.1	76.1
32		75.7	75.7	75.9	75.9	75.9	75.7
33		76.3	75.9	75.9	75.9	75.9	75.7
34		76.1	75.9	76.1	76.3	76.3	75.9
35		75.9	75.9	76.1	76.1	76.3	75.9
36		75.9	75.9	76.1	76.1	76.3	75.9

Detailed parametric data for each frame

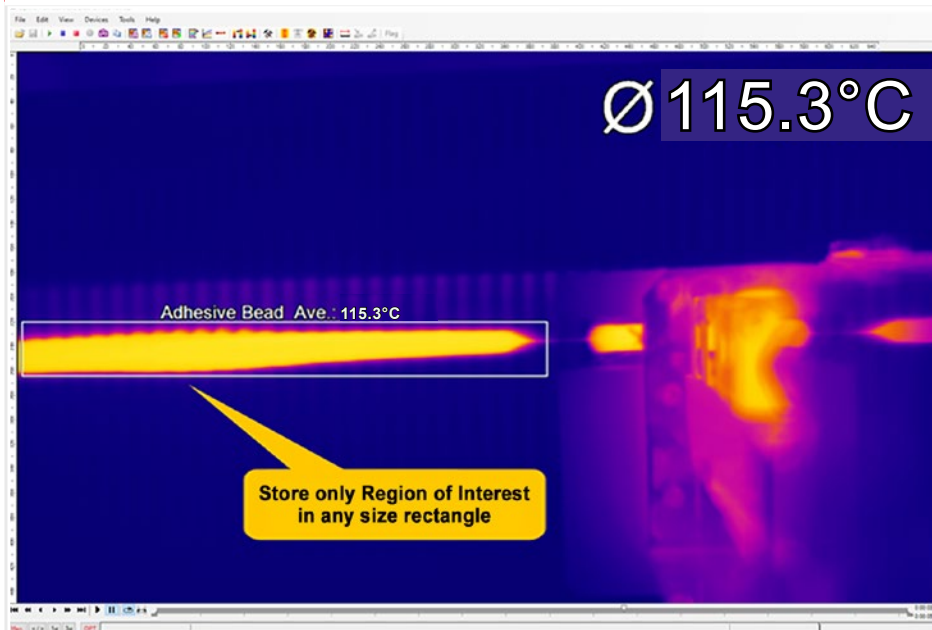
Time stamp and frame counter for each frame

Stored MS Excel worksheet together with relevant information from the infrared image

Product Details





- Designed to work in conjunction with Optris PIX Connect software, which runs in the background while the RAVI File Converter operates
- Researchers can now access and analyze full image pixel data in other environments without advancing through a series of RAVI files and individually storing snapshot .csv files
- Extracts temperature data from each pixel in the image and places it as a text file or in MS Excel worksheets together with relevant information from the image saving hours of laborious data extraction

Powerful PIX Connect software enables pixel data file storage of full images or areas of interest



Define measurement areas which extracts temperature data only from ROI

- Works in conjunction with **license-free** PIX Connect software
- Data files are reduced in size when PIX Connect area tools (ellipse, rectangle, polygon) are used to restrict data collection to a specific region of interest (ROI)
- Multiple user license options available
- Extensive online and offline data analysis

-  [linkedin.com/company/optris](https://www.linkedin.com/company/optris)
-  [youtube.com/@Optris](https://www.youtube.com/@Optris)
-  twitter.com/optris
-  [facebook.com/optris.gmbh](https://www.facebook.com/optris.gmbh)

when temperature matters

Optris GmbH
Ferdinand-Buisson-Str. 14
13127 Berlin · Germany

Phone: +49 30 500 197-0
Fax: +49 30 500 197-10
E-mail: info@optris.com
www.optris.com

