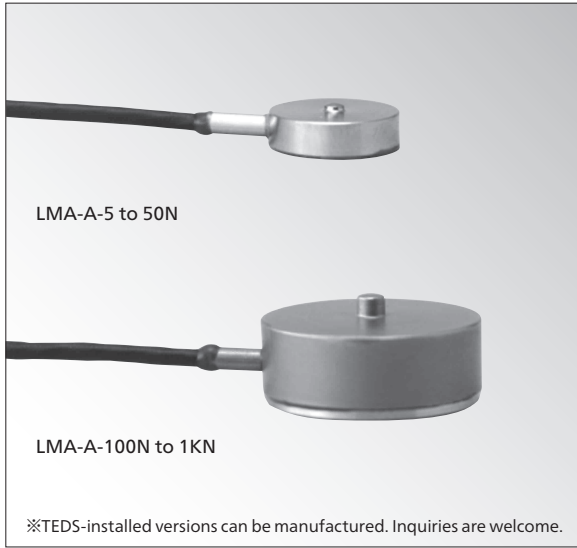


LMA-A

● 12 mmφ, 4 mm Thick (5 to 50 N) ● 5 N to 1 kN

Small-Sized Compression Load Cells



Specifications

Performance

Rated Capacity :	See table below.
Nonlinearity :	Within ±1% RO
Hysteresis :	Within ±1% RO
Repeatability :	1% RO or less
Rated Output :	0.6 to 2 mV/V (1200 to 4000 μm/m) (LMA-A-5N) 0.75 to 2 mV/V (1500 to 4000 μm/m) (LMA-A-10N to 1KN)
Note : Rated output is sorted to one of the classes divided by every 2% difference in output value. Since the rated output stated in the Test Data Sheet is the center value of the class, it may have a maximum error of ±1%.	

Environmental Characteristics

Safe Temperature Range :	-10 to 60°C (however, noncondensing)
Compensated Temperature Range :	0 to 50°C (however, noncondensing)
Temperature Effect on Zero Balance :	Within ±0.3% RO/°C (LMA-A-5N) Within ±0.2% RO/°C (LMA-A-10N to 50N) Within ±0.05% RO/°C (LMA-A-100N to 1KN)
Temperature Effect on Output :	Within ±0.2%/°C (LMA-A-5N to 50N) Within ±0.05%/°C (LMA-A-100N to 1KN)

Electrical Characteristics

Safe Excitation Voltage :	7V AC or DC
Recommended Excitation Voltage :	1 to 5 VAC or DC
Input Resistance :	350Ω±2.5%
Output Resistance :	350Ω±2.5%
Cable :	4-conductor (0.035 mm ²) vinyl shielded cable, 1.7 mm diameter by 2 m long, bared at the tip (Shield wire is not connected to mainframe.)

Mechanical Properties

Safe Overload Rating :	150%
Natural Frequency :	See table below.
Weight :	See table below.
Material :	A copper alloy and more than 100N are stainless steel.
Protection Rating :	IP64 JIS C 0920 splash-proof type

Optional Accessory

Mount Base CFM-A

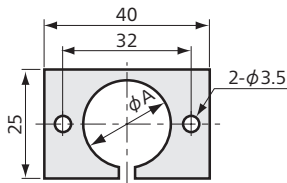
Model	Rated Capacity	Natural Frequency (Approx.)	Weight (Approx.)*	Mount Base
LMA-A-5N	5N	15.3kHz	1.5g	CFM-5A
LMA-A-10N	10N	17.5kHz		
LMA-A-20N	20N	24.8kHz		
LMA-A-50N	50N	32.6kHz		
LMA-A-100N	100N	21.6kHz	11g	CFM-100A
LMA-A-200N	200N	29.7kHz		
LMA-A-500N	500N	43.9kHz		
LMA-A-1KN	1kN	53kHz		

*not including cable

Compact, Lightweight, Low Price Suitable for Load Distribution Measurement

Compact and lightweight LMA-A series load cells can be used by merely putting or bonding on the measurement point or setting in a hollow.

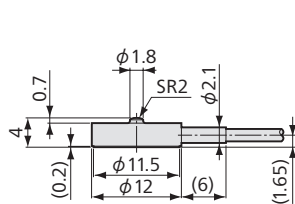
Mount Base CFM-A



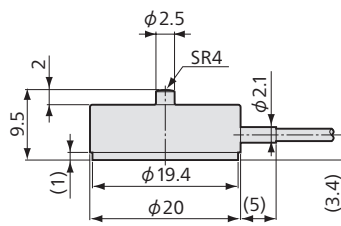
Model	φA	Thickness
CFM-5A	12.2	1.5
CFM-100A	20.2	3.0

Material: Aluminum alloy

Dimensions

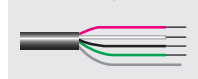


LMA-A-5 to 50N



LMA-A-100N to 1KN

Bared at the tip



● Physical quantity indication

● Static measurement

● Dynamic measurement

