

## Highly Accurate and Reliable Pressure Transducers

- Hermetically-sealed structure with inert gas filled in
- Wide range of rated capacities
- Abundant application achievements

Highly accurate and reliable PG-U series pressure transducers are hermetically sealed with inert gas filled in to enable stable measurement for a long period of time. Typical applications include pressure measurement of hydraulic or pneumatic cylinder and pressure test of high-pressure water or gas pipe.

- Highly Reliable
- 200 kPa to 50 MPa

### Specifications

#### Performance

Rated Capacity :	See table below.
Nonlinearity :	Within $\pm 0.3\%$ RO (PG-2 to 10KU) Within $\pm 0.2\%$ RO (PG-20 to 500KU)
Hysteresis :	Within $\pm 0.3\%$ RO (PG-2 to 10KU) Within $\pm 0.2\%$ RO (PG-20 to 500KU)
Repeatability :	0.1% RO or less
Rated Output :	2 mV/V (4000 $\mu$ m/m) $\pm 0.5\%$ ( $\pm 1\%$ with PG-2 to 10KU)

#### Environmental Characteristics

Safe Temperature Range :	-20 to 70°C
Compensated Temperature Range :	-10 to 60°C
Temperature Effect on Zero Balance :	Within $\pm 0.02\%$ RO/°C
Temperature Effect on Output :	Within $\pm 0.02\%$ /°C

#### Electrical Characteristics

Safe Excitation Voltage :	15V AC or DC
Recommended Excitation Voltage :	1 to 10V AC or DC
Input Resistance :	350 $\Omega$ $\pm 1\%$
Output Resistance :	350 $\Omega$ $\pm 1\%$
Dedicated connection cable :	TT-01
Included cable :	4-conductor (0.3mm <sup>2</sup> ) chloroprene shielded cable, 7.6 mm diameter by 3 m long, terminated with connector plug (Shield wire is connected to mainframe.)

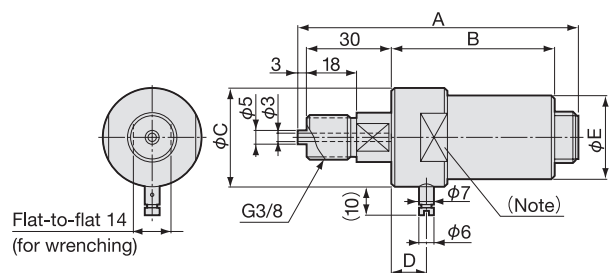
#### Mechanical Properties

Safe Overload Rating :	150%
Natural Frequency :	See table below.
Material :	Case : Anode oxide coated aluminum Liquid-contacting part : SUS 630 For 10KU or more, the mainframe is diecast zinc alloy (chrome plated)
Weight :	Approx. 300g (2, 5KU is approx. 500g) (not including cable)
Mounting Screw :	G3/8, male

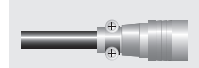
Standard Accessory Gasket (leather)

※Do not use PG-200KU to PG-500KU for endurance/fatigue tests.  
 ※Avoid using for a long-term measurement of gas pressure if much importance is attached to the stability of output in a minute range.  
 For such application, we can manufacture models with no air vent.

### Dimensions



Connector plug



Note: 2 flats are provided only for PG-300 and 500KU.  
Do not apply a wrench to the flats.

Model	Rated Capacity	Natural Frequency(Approx.)	A	B	φC	D	φE
PG-2KU	200kPa	2kHz	104	63	54	4	54
PG-5KU	500kPa	4kHz					
PG-10KU	1MPa	7kHz	98	56	36	10	30
PG-20KU	2MPa	13kHz					
PG-50KU	5MPa	21kHz	102	60	36	13	30
PG-100KU	10MPa	29kHz					
PG-200KU	20MPa	40kHz	102	60	46	13	30
PG-300KU	30MPa	45kHz					
PG-500KU	50MPa	50kHz					