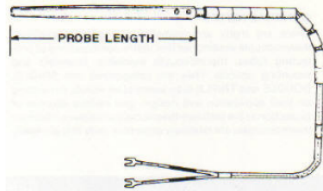


**Products**

**Sensors - Industrial Thermocouples - Thermo-Dip® Thermocouple**

**Non-Ferrous Foundry Thermocouples**

Thermo-Dip thermocouples are designed for intermittent temperature sensing below 2300°F (1255°C), for use in molten brass, copper, aluminum, lead and other non-ferrous metals. The 446 SS sheath (0.500" OD) protects a 16 gage ANSI Type K thermocouple. Insulated at the hot end with double bore ceramic insulators and fiberglass sleeving at the cold end. Interchangeable with other makes.



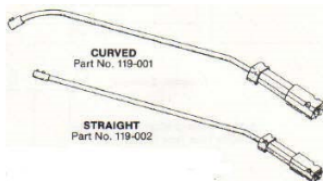
PROBE LENGTHS	FOR HOLDER LENGTHS			
	43" Part No.	55" Part No.	72" Part No.	96" Part No.
8"	119-084	119-085	119-087	119-089
12"	119-124	119-125	119-127	119-129
15"	119-154	119-155	119-157	119-159
20"	119-204	119-205	119-207	119-209
24"	119-244	119-245	119-247	119-249
30"	119-304	119-305	119-307	119-309

**Thermo-Dip® Holder**

The Thermo-Dip holder is constructed of a stainless steel tube with reinforced thermoset molded grip. Thermocouple installs in stainless steel sleeve with two stainless set screws. Removing one half of grip exposes terminals for easy thermocouple replacement. Interchangeable with other makes.

Curved holder is available in lengths of 43", 55", 72" and 96". Straight holder is available in 31" length only.

PART NO.	LENGTH
119-001 <i>Curved Holder</i>	43"
	55"
	72"
	96"
119-002 <i>Straight Holder</i>	31"



**Armored Extension Cable**

Connects the Thermo-Dip holder to wall mounted instrument. Flexible armor protects 16 ga. Type KX extension wire; strain relief springs provide extra protection at each end.

Available in lengths from 5 feet.

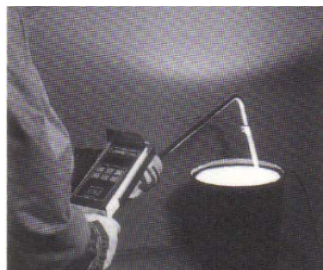
PART NO.	LENGTH
119-005-(*)	5 feet (*)=Total cable length in feet



**Thermo-Dip® Holder for Digital Foundry Thermicator**

The Thermo-Dip holder is constructed of a stainless steel tube and box with reinforced thermoset molded grip. Thermocouple installs in stainless steel sleeve with two stainless set screws. Removing one half of grip exposes terminals for easy thermocouple replacement. Thermicator 819-K indicator slides into holder for fast dependable connections.

PART NO.	LENGTH
119-006	43"
	55"
	72"
	96"



For more information regarding Thermo-Dip Thermocouples

Please consult your Marlin Catalog.