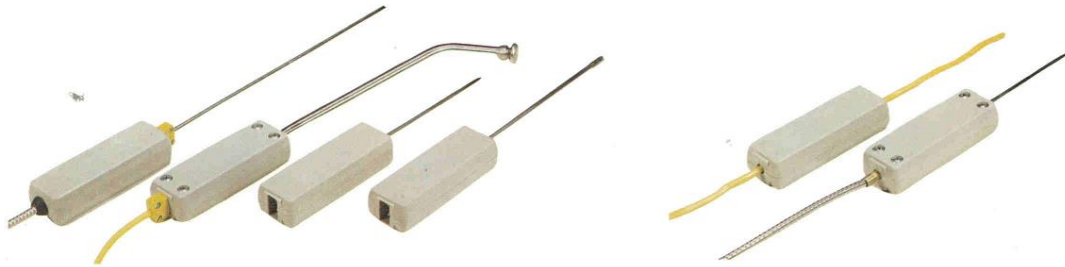
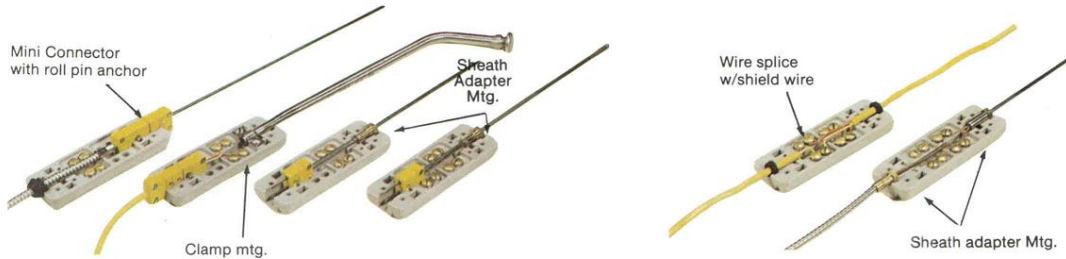


Marlin –Connectors – Universal Probe Holder (UPH)

CONNECTORS UNIVERSAL PROBE HANDLE



TYPICAL PROBE HANDLE CONFIGURATION



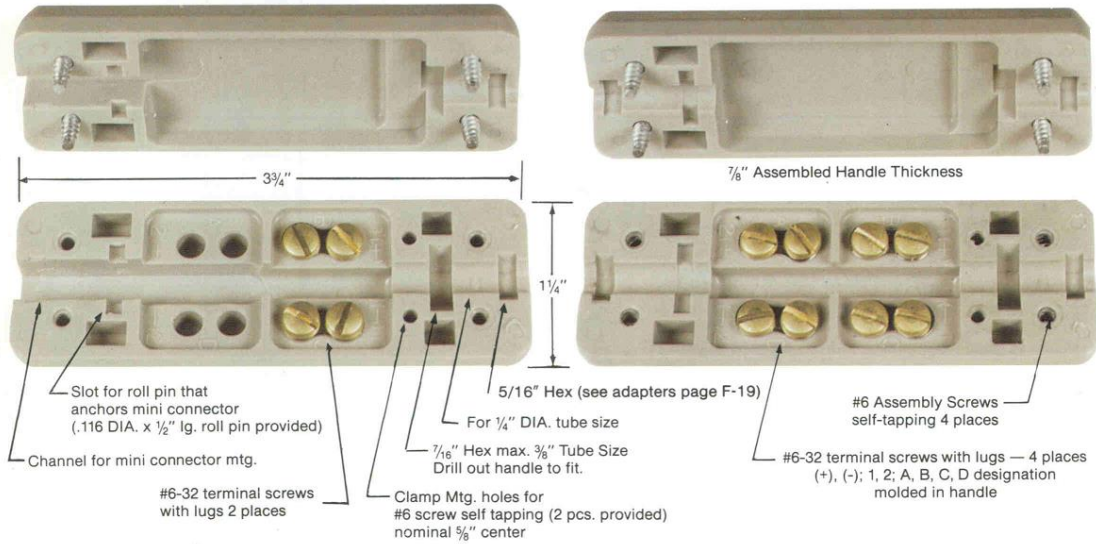
TYPICAL PROBE HANDLE HOOK-UP

This universal probe handle has been designed to accommodate a variety of mounting arrangements. Mini connectors, hex sheath adapters and rigid clamping provide dependable probe assemblies that properly strain-relieves

both the sheath and the wire. Molded of reinforced nylon the handle can be used to temperatures of 260°F (127°C) (not available in high-temperature).

FOR MINI CONNECTORS

FOR DIRECT WIRES



Part Number	Price
UPH-1	

Part Number	Price
UPH-2	