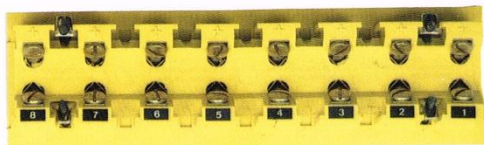
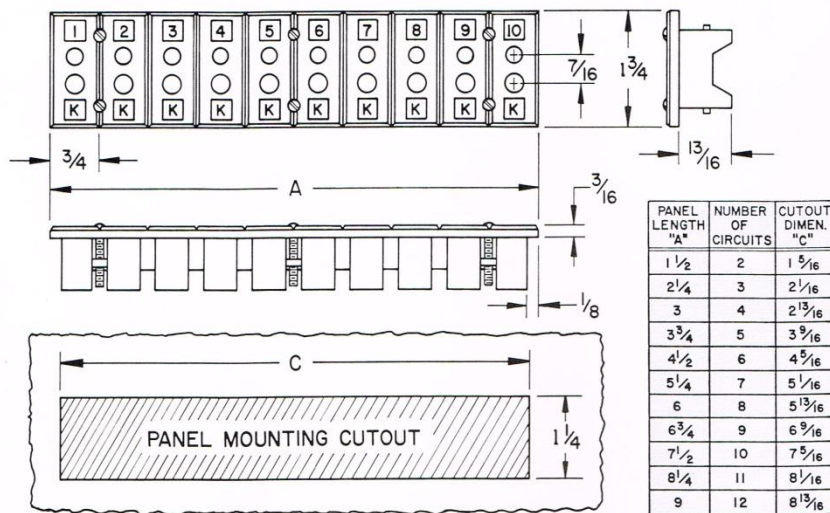


Marlin – Connectors – Full Size – 2-Pole Stripanel

CONNECTORS FULL SIZE — 2-POLE STRIPANEL®

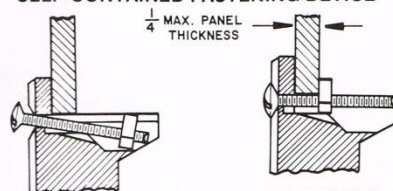
CATALOG NUMBER 1032



(BACK VIEW)

- Stripanels available 2 to 12 circuits - Color coded.
- For cutouts — Does not require mounting frame or mounting holes.
- Stripanels can be wired and installed completely from front. Patented self-contained fastening device, "T Nut", is permanently attached, simplifies mounting, holds tight. Patent No. 3046516.
- Thermocouple type and circuit numbers are marked on face of Stripanel with corresponding circuit numbers and polarity identification on the back. Stripanels are numbered starting from "1" unless specified otherwise.
- Stripanels are molded of glass-filled thermoset compounds (will not melt) for high strength and dependability. The color coded panels will withstand ambient temperatures to 400°F (205°C) continuous and 500°F (260°C) intermittent. High-Temperature panels (All Hi-Temp panels are color coded red) will withstand ambient temperatures to 800°F (425°C) continuous and 1000°F (540°C) intermittent.
- Inserts are spring-loaded collet type to assure positive full contact with the negative insert larger making it virtually impossible to mismatch.
- For corrosive application, gold plated contacts are available. Caution — system errors can result from use of plated contacts if significant thermal gradients exist.

SELF-CONTAINED FASTENING DEVICE



Ready for installation, T-nuts are out of the way at bottom of track.

COMPLETELY FRONT FASTENING
Screws accessible from the front draw T-nuts up molded track and hold them tight against back wall.

TYPE CODE	INSERT MAT'L. ALLOY		COLOR CODE
	POSITIVE	NEGATIVE	
J	IRON	CONSTANTAN	BLACK
T	COPPER	CONSTANTAN	BLUE
K	CHROMEL™	ALUMEL™	YELLOW
N	NICROSIL	NISIL	ORANGE
R	COPPER	#11 ALLOY	GREEN
S	COPPER	#11 ALLOY	GREEN
E	CHROMEL™	CONSTANTAN	VIOLET
U	COPPER	COPPER	WHITE
C	#405 ALLOY	#426 ALLOY	BROWN
(ALL HI-TEMP STRIPANELS)			RED