

versadac™

Scalable Data Recorder

... a recorder that can reduce installation costs and improve efficiency

The versadac™ scalable recorder offers a versatile solution for data recording at point of measurement. Comprehensive security and data integrity make it ideal for use in regulated industries, such as pharmaceutical or heat treatment, or for any application where loss of data during a manufacturing process would result in loss of revenue through scrap or rework. Data is recorded in tamper resistant binary check summed files (known as UHH) and stored in on board flash memory. Flexible archiving strategies ensure long term data is kept secure for later retrieval and analysis if required.

The versatility of this unit comes from a flexible range of base sizes and selection of input and output modules to best suit specific application needs. A wide range of software features are available including batch control, maths functions, totalisers, communications channels and audit trail. Electronic signatures and password control functionality which meets the requirements of FDA 21 CFR Part 11 is also available. Upgrade of both software and hardware can be easily carried out on site ensuring the versadac recorder can grow with your process needs.

The versadac recorder is easy to integrate into wider systems with Modbus Master/Slave or EtherNet/IP Client or Server communications options. The modular equipment can also be distributed throughout the plant in best position to reduce installation and cabling costs.

Set up of the recorder is via the easy to use Eurotherm iTools PC software. Configurations can be saved and re-used and pre-configured modules are available to reduce engineering costs. Once installed, the recorders can be viewed and managed securely from anywhere on the network, improving operational efficiency. Archived data can be automatically stored to designated FTP servers or to the secure Eurotherm Online Services (EOS) data cloud using EOS Director.

- **Record**
 - Secure
 - Never lose data
 - Exceptional data and access security
 - Electronic signatures
 - Self-healing, validated data archive
- **Manage**
 - View data from anywhere
 - Extensive function library to further process data
 - Record data from remote devices
 - Intelligent data archiving
 - Web server
 - Email notification
- **Optimise**
 - Optimise installation by recording where you want to
 - Scalable to fit process with modular I/O
 - Easy integration
 - Compact, easy installation
 - Simple to upgrade



Record Manage Optimise

Eurotherm®

by **Schneider** Electric

Data integrity and user access control

The versadac recorder offers advanced recording and archive strategies to ensure valuable process data is kept safe. This is supported by comprehensive and secure user access options to give complete peace of mind for data integrity with access when and where you need it. It gives best in class data recording at point of measurement and meets the most stringent of regulatory requirements.

User access control is managed with unique user names and passwords and supports use of Active Directory. For the applications regulated by FDA 21 CFR Part 11 or Nadcap additional peace of mind is provided by features such as recorded logins, password ageing, minimum password lengths, account retirement, timed logout, electronic signing and electronic authorisation.

Easy to integrate

The versadac recorder provides many features and options that can bring real benefit in standalone applications or it can be easily integrated into any wider process using native communications options for Modbus Master TCP/IP, RTU and EtherNet/IP.

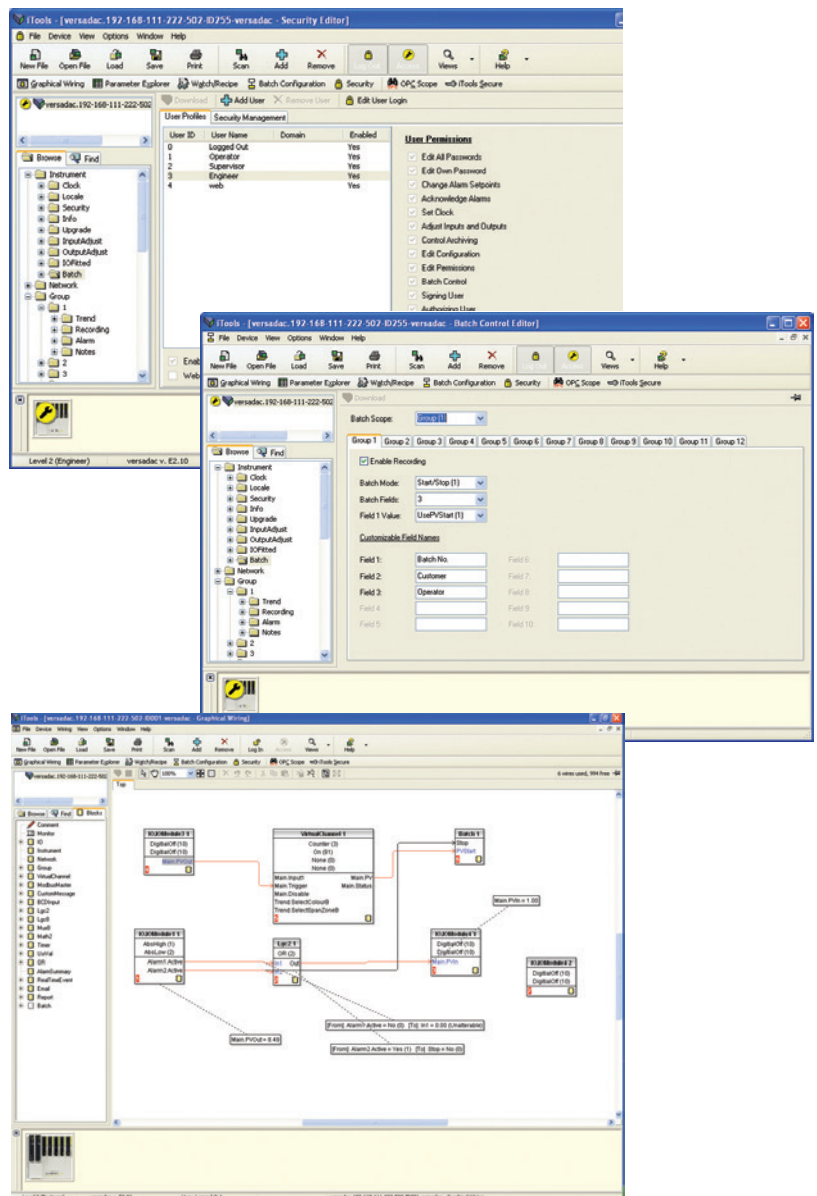
Batch Control

Powerful batch functionality is included within the recorder and, combined with the ability to group data into up to 30 groups, the instrument can run up to 30 simultaneous batches. The Batch software option enables the user to enter specific information relating to a batch and record this alongside the process data. The feature provides up to 10 operator entry fields which can be configured for manual or automatic data entry. These free format fields may be used to store Batch Number, Job Number, Customer Name, Cycle Number, etc. Operator details will be logged with the rest of the batch data on start and/or stop of the batch, providing complete process traceability.

Toolkit blocks

Toolkit blocks provide mathematical or logical expressions to meet the needs of more sophisticated applications. Using the Eurotherm iTools PC configuration software, functions may be wired together with simple drag and drop techniques to ensure easy creation of even the most complex configurations. Variables are easily parameterised using pull down lists or direct data entry.

| | |
|----------------------------------|--|
| User Variables: | 12 real values per base |
| Analogue Function Blocks: | 250 function blocks per base. (Add, Subtract, Multiply, Divide, Absolute difference, Maximum, Minimum, Hot Swap, Sample and Hold, Power, Square Root, Log, Ln, Exponential, Select) |
| Digital function Blocks: | 12 function blocks per base. (AND, OR, XOR, Latch, Equal, Not Equal, Greater than, Less than, Greater than or equal to, Less than or equal to) |
| Timing Functions: | 12 Timers |



Application Blocks



Steriliser block

The steriliser block has been developed in collaboration with a number of steriliser manufacturers to provide a solution for the Independent Monitoring System (IMS) within the decontamination process. It provides cycle based data logging and monitoring with display of instantaneous information on the status of the sterilisation cycle.

The Steriliser Application supports up to four process variables with chamber temperature, chamber pressure and air detector being the three primary variables. It is suitable for use with porous load, dry heat, flash and LTS sterilisers or for any steriliser requiring up to four process variables.

Mean Kinetic Temperature (MKT)

Measuring and recording temperature is vital to the storage of perishable goods but there is more than one way to record an average. The International Conference on Harmonisation of Technical Requirements for Registration of Pharmaceuticals for Human Use (ICH) defines MKT as being "A single derived temperature that, if maintained over a defined period of time, affords the same thermal challenge to a drug or drug product as would be experienced over a range of both higher and lower temperatures for an equivalent defined period." It expresses the cumulative thermal stress experienced by a product at varying temperatures during storage and distribution. It differs from other means, such as simple numerical average or arithmetic mean, in that higher temperatures are given greater weight in computing the average in recognition of the accelerated rate of thermal degradation of materials at higher temperatures.

The versadac recorder provides support for up to 30 MKT calculation blocks, one per Group within the unit.

Steam Flow

The Steam Flow Application block provides support for the following saturated steam calculations:

Saturated Steam Mass Flow

This calculates the mass flow of steam using either pressure or temperature input with a volumetric flow rate. Using data from the steam tables, the density of steam at the appropriate temperature or pressure is used to calculate the mass per unit time.

Saturated Steam Heat Flow

This calculates the heat flow of steam using either pressure or temperature input with a volumetric flow rate. Using data from the steam tables, the enthalpy of steam at the appropriate temperature or pressure is used to calculate the energy per unit time.

Saturated Steam Heat Consumed

This calculates the heat consumed in a process by monitoring the energy going into the process and the residual energy leaving the process using a similar calculation to the heat flow calculation above. Subtracting one from the other gives the heat consumed by the process. The calculation requires either pressure or temperature from the process input and temperature of the condensate at the output along with a volumetric flow rate. The output of this calculation is in kJ/time. The instantaneous values of the steam calculations can be totalised (or integrated) to give a total flow value on a configurable time period such as per hour, per day, per week or per shift. This requires the totaliser function within the versadac recorder.

Specification

Base Unit

General
The base unit is fitted with the versadac recorder modules plus additional I/O modules. These modules plug onto terminal units, which provide the wiring interface between the plant or machine and the I/O modules. Bases are available in 4 sizes to suit the number of modules required in a particular system.

Communication between the I/O modules and the processor is effected by the use of a passive internal module I/O bus running along the width of the base.

Each module position is tracked separately for additional security during live replacement of I/O modules.

The base consists of an aluminium extrusion, the internal I/O bus and mounting supports. It is designed to be DIN rail mounted or directly fixed to a bulkhead or mounting plate.

Mechanical

Based on the number of modules and allowing for future expansion, the versadac recorder can be supplied in a range of standard base sizes to suit process requirements. The dimensions and weights of the different base sizes are detailed in the table below:

| Module Capacity (Base Size) | 0 | 4 | 8 | 16 |
|-----------------------------|-----|------|-----|-----|
| Weight (no modules) kg | 0.2 | 0.7 | 1.0 | 1.6 |
| Weight (all modules) kg | 0.7 | 1.65 | 3.1 | 5.3 |

Height: 180mm
 Depth: 132 -135 mm with retaining lever raised
 Mounting: DIN rail or Bulkhead, mounted vertically
 DIN rail: Use symmetrical DIN rail to EN50022-35 x 7.5 or 35 x 15
 Casing: Without additional protection IP20
 Ventilation space: 25mm free space above and below

General

Supply voltage range: 24V dc $\pm 20\%$
 Power consumption: < 82W maximum for fully loaded rack
 Fuse rating: 0.5A time lag (Not customer replaceable)
 Surge current: 8A maximum
 Module power consumption: See individual module specification

Environmental

Operating temperature: 0 to 55°C
 Storage temperature: -25°C to 85°C
 Relative humidity: 5 to 95% (non-condensing)

RFI

EMC emissions: BS EN61326 – 1: 2006 Class A
 EMC immunity: BS EN61326 – 1: 2006 Industrial Locations

Safety

BS EN61010-1/A2; 2001
 Installation cat II, Pollution degree 2
 Safety earth and screen connections are made to earth terminals at the bottom of the base

Vibration

Vibration: IEC61131-2:2007 section 4.2.1
 1.75mm peak amplitude 5-8.4Hz;
 1g peak amplitude, 8.4-150Hz
 30 minutes dwell at resonance in all 3 planes
 Shock: 15g static shock

Diagnostic LEDs

Diagnostic LEDs indicate module diagnostic status.
 All modules: A green LED at the top indicates the module is powered and operating correctly
 Analog modules: Red LEDs for each channel to indicate channel failure
 Digital modules: Yellow LEDs for each channel to indicate the channel state

Approvals

GOST: CU TR pattern (A18 pending)

Mechanical details

The diagram illustrates the mechanical details of the versadac base unit. It includes a front view showing the module slots and a cover catch, and a side view showing the DIN rail mounting and dimensions. The side view dimensions include a width of 132 mm (5.2 in) for the module profile, a height of 180 mm (7.1 in) for the DIN rail, and a maximum depth of 160 mm (6.3 in) when the cover is open. A specific depth of 83.5 mm (3.29 in) is also indicated for the DIN rail section.

| Base Size | A mm (inches) |
|-----------|---------------|
| 0 module | 61.25 (2.41) |
| 4 module | 162.75 (6.41) |
| 8 module | 274 (10.8) |
| 16 module | 477 (18.8) |

Input Output Controller (IOC)

The Input Output Controller (IOC) is the central processing unit of the versadac recorder. Each versadac recorder base has an IOC module mounted in the extreme left-hand position. This module communicates with the internal I/O bus with module interconnection via the Base unit PCB. Each I/O slot consists of a terminal unit and an I/O module. These modules can be fitted to any available slot. The versadac can be ordered in one of four base sizes (0 – no I/O, 4, 8 or 16).

Processor Module

Processor and communications diagnostics are available from the LEDs on the front of the processor module.

| | |
|------------------------------|---|
| Control module: | A green LED at the top indicates the module is powered and operating correctly |
| Internal diagnostics: | A red LED indicates failure of the internal self diagnostic routines or I/O module type mismatch between what is fitted and that expected or I/O module failure |
| Battery (if installed): | A green LED indicates battery health |
| Serial communications: | A green LED indicates communications activity |
| Ethernet: | A yellow LED indicates Ethernet link and flashes to show activity |
| USB: | A green LED indicates USB insertion, periodic flashing indicates USB activity |
| USB over-current indication: | A yellow LED indicates an over current error |

Power on Self Tests

On power up the versadac recorder automatically performs Power On Self Tests. These are a series of diagnostic tests used to assess the instrument health. The above LEDs indicate module diagnostic status in case of a problem.

Physical

| | |
|-------------------|--|
| CPU: | Freescall Power QUICC II Pro processor MPC8313 |
| Bus Size: | 32 bit |
| System Clock: | 330 MHz |
| Logging Capacity: | 96MB on board, Log files transferred by FTP |
| USB: | USB 2.0 connected on terminal unit |

Live plug-in

I/O modules can be replaced while powered without any disturbance to the field wiring or other inputs and outputs – reducing downtime and minimising disturbance to other signal conditioning strategies.

Communications

Ethernet

Supports 10/100baseT Ethernet. Simultaneously it can support Modbus-TCP Master or Slave and EtherNet/IP.

| | |
|---------------------------|------------------------------------|
| Connectors: | RJ45 connector |
| Network medium: | Ethernet Cat5 shielded cables |
| Speed: | 10/100baseT auto-select |
| Line length (maximum): | 100 metres, extendible by repeater |
| Allocation of IP address: | Fixed, DHCP |
| Modbus: | TCP configurable master or slave |
| Max numbers of slaves: | 32 Modbus TCP slaves |
| Isolation: | 50V dc; 30V ac (IEEE802.3) |

RS422/485 Serial Communications

| | |
|-----------------------|---|
| Connector: | 1 x 9 way D-type connector |
| Comms medium: | RS422 (5-wire) or RS485 (3-wire), jumper select |
| Line impedance: | 120Ω-240Ω twisted pair |
| Line length: | 1220m maximum at 9600 bits/sec |
| Max number of slaves: | 32 serial slave devices |
| Protocol: | Modbus/J-BUS RTU configurable master or slave |
| Data rate: | Selectable 600-38.4k bits/sec |
| Data format: | 8 bit, selectable parity 1/2 stop bits |

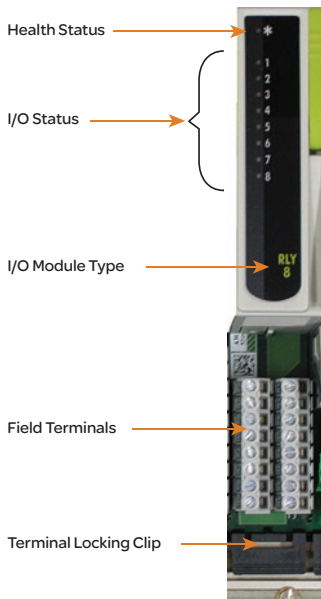
Note: Use of a communications buffer/isolator is recommended

Supported I/O Types

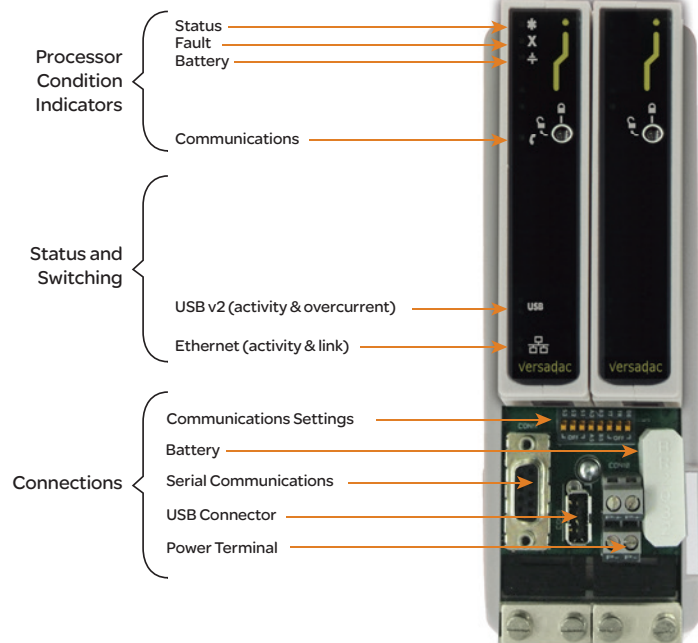
The versadac recorder shares I/O modules with the T2750PAC, T2550PAC and 2500 I/O.

| Type | Description |
|------|-------------------------------|
| AI2 | Two Channel Analog Input |
| AI3 | Three Channel Analog Input |
| AI4 | Four Channel Analog Input |
| AI8 | Eight Channel Analog Input |
| AO2 | Two Channel Analog Output |
| DI16 | Sixteen Channel Digital Input |
| RLY8 | Eight Channel Relay Output |

Module condition indicators



Processor condition indicators



AI2 – Two Channel Analog Input



This analog input module is used to monitor analogue signals from a wide range of plant sensors. The mA and TC inputs each require the appropriate terminal unit. The second channel of the AI2 has a special high impedance range for use with zirconia probe inputs for oxygen measurement.

| | |
|------------------------|--|
| Module type: | AI2-DC, AI2-TC, AI2-MA |
| No of channels: | 2 |
| Input types: | TC, RTD, Volts, mA, mV, Potentiometer, Pyrometer, Zirconia probe |
| mV range: | -150mV to +150mV at input impedance >100MΩ |
| mA range: | -25mA to +25mA with 5Ω burden in the terminal unit |
| Volts range: | -10.3V to +10.3V at input impedance 303kΩ, 0 to 1.8V ≥10MΩ high impedance range (channel 2 only) |
| RTD support: | Support for 2, 3 and 4-wire resistance thermometer devices (RTD) |
| Resolution: | Better than 0.001% of range |
| Ohms range: | 0 to 560Ω 2, 3 or 4-wire lead compensation |
| Hi Ohms range: | 0 to 6kΩ 2, 3 or 4-wire lead compensation |
| Pot range: | 0% to 100% 'rotation' of 100Ω to 6kΩ pot |
| Linearity: | Better than 0.01% of range |
| Input filtering: | OFF to 60 seconds |
| Input accuracy: | Electrical input factory calibrated to better than 0.1% of reading |
| System isolation: | 300V RMS or dc (double insulation) |
| Channel isolation: | 300V RMS or dc (basic insulation) |
| Series mode rejection: | >60dB (47-63Hz) |
| Common mode rejection: | >120dB (47-63Hz) |
| Power consumption: | 2W maximum |

Note:

User calibration options can improve performance, limited only by noise and non-linearity.

Input specification

| | |
|-------------------------|---|
| TC Linearisation types: | B, C, D, E, G2, J, K, L, N, R, S, T, U, NiMo/NiCo, Platinel, Ni/NiMo, Pt20%RH Pt40%Rh, Custom, Linear, SqRoot, XX ^{3/2} , X ^{3/2} |
| RTD LIN Types: | Cu10, Pt100, Pt100a, JPt100, Pt1000, Ni100, Ni120, Cu53 |
| CJC system: | Measured by RTD, located beneath the input connector |
| Initial CJC accuracy: | ±0.5°C typical (±1°C maximum) |
| CJC rejection: | Better than 30:1 over operating temperature range |

AI3 – Three Channel Analog Input



Provides three isolated current input channels specifically designed to meet the requirements of modern two wire transmitters. Each channel has its own isolated 24V supply for transmitter excitation. Each channel's 24V dc supply is protected against short circuit and utilises a sophisticated trip system in which the module senses over current and cuts the power. After a period the circuit checks for continued circuit malfunction.

| | |
|------------------------|--|
| Module type: | AI3 |
| No of channels: | 3 |
| Input range: | -28mA to +28mA |
| Resolution: | Better than 0.5uA with 1.6 sec filter time (equivalent: 16 bits) |
| Linearity: | Better than 1µA |
| Initial accuracy: | Factory calibrated to better than ±0.1% of reading at 25% |
| Input filtering: | OFF to 60 seconds |
| Burden resistance: | 60Ω nominal, 50mA maximum current |
| Channel PSU: | 20-25V dc, current limited 30mA nominal, self-resetting |
| System isolation: | 300V RMS or dc (double insulation) |
| Channel isolation: | 50V RMS or dc (basic insulation) |
| Series mode rejection: | >60dB (47-63Hz) |
| Common mode rejection: | >120dB (47-63Hz) |
| Power consumption: | Current input mode - 2.2W 3 powered loops - 3.7W |

Notes:

1. User calibration options can improve performance, limited only by noise and non-linearity.
2. Total burden can be increased to 250Ω by cutting a link track on the terminal unit.

AI4 – Four Channel Analog Input



This analog input module is used to monitor analog signals from a wide range of plant sensors. The mA and TC inputs each require the appropriate Terminal Unit.

| | |
|------------------------|---|
| Module type: | AI3-TC, AI3-MA, AI3-MV |
| No of channels: | 4 |
| Input types: | TC, mV, mA, Pyrometer mV range: -150 to +150mV at input impedance >20M Ω |
| mA range: | -25 to +25mA with 5 Ω burden in the terminal unit |
| Resolution: | Better than 2 μ V |
| Input filtering: | OFF to 60 seconds |
| Initial accuracy: | Electrical input factory calibrated to better than 0.1% of reading Burden resistor 5 Ω \pm 1% (fitted to terminal unit) |
| System isolation: | 300V RMS or dc (double insulation) |
| Channel isolation: | 300V RMS or dc (basic insulation) Ch1 and Ch2 from Ch3 and Ch4 |
| Series mode rejection: | >60dB (47-63Hz) |
| Common mode rejection: | >120dB (47-63Hz) |
| Power consumption: | 2W maximum |

Notes:

1. User calibration options can improve performance, limited only by noise and non-linearity.
2. Wiring care and sensor choice should be used to prevent ground loops when using non-isolated thermocouples.

Input specification

| | |
|-------------------------|---|
| TC Linearisation types: | B, C, D, E, G2, J, K, L, N, R, S, T, U, NiMo/NiCo, Platinel, Ni/NiMo, Pt20%RHPt40%Rh, Custom, Linear, SqRoot, X ^{3/2} , X ^{5/2} |
| CJC system: | Measured by RTD, located beneath the input connector |
| Initial CJC accuracy: | \pm 0.5 $^{\circ}$ C typical (\pm 1 $^{\circ}$ C maximum) |
| CJC rejection: | Better than 30:1 over operating temperature range |

AI8 – Eight Channel Analogue Input



This analogue input module is used to monitor analogue signals from a wide range of plant sensors. The mA and TC inputs each require the appropriate terminal unit.

| | |
|------------------------|---|
| Module type: | AI8-TC, AI8-MA, AI8-RT |
| No of channels: | 8 |
| Input types: | TC, RTD, mA, mV |
| mV range: | -80mV to +80mV at input impedance >10M Ω differential 2.5M Ω common mode |
| mA range: | -20mA to +20mA with 3.3 Ω burden in the terminal unit |
| RTD support: | Support for 2 and 3-wire resistance thermometer devices |
| Ohms range: | 20 Ω to 500 Ω and 2 and 3-wire lead compensation |
| Hi Ohms range: | 200 Ω to 5K Ω 2 and 3-wire-wire lead compensation |
| Resolution: | \pm 10m Ω and \pm 100m Ω (with 0.4s filter) |
| Input accuracy: | Electrical input factory calibrated to better than 0.1% of reading |
| Linearity: | 20ppm of span |
| System isolation: | 300V RMS or dc (double insulation) |
| Channel isolation: | 300V RMS or dc (basic insulation) Galvanic Isolated in pairs |
| Series mode rejection: | 60dB (47-63Hz) |
| Common mode rejection: | 120dB (47-63kHz) >120dB @50/60Hz |
| Power consumption: | 1.8W maximum |

Input specification

| | |
|-------------------------|---|
| TC Linearisation types: | B, C, D, E, G2, J, K, L, N, R, S, T, U, NiMo/NiCo, Platinel, Ni/NiMo, Pt20%RHPt40%Rh, Custom, Linear, SqRoot, X ^{3/2} , X ^{5/2} |
| CJC system: | Measured by 2 RTD (Pt100), located beneath the input connector |
| Initial CJC accuracy: | \pm 0.8 $^{\circ}$ C – sensed with two PT100 sensors on TU |
| CJC rejection: | Better than 30:1 over 0 $^{\circ}$ C to +55 $^{\circ}$ C ambient |

AO2 – Two Channel Analog Output



This analog output module provides two isolated analog output channels. Each output can be independently configured for current or voltage.

| | |
|-----------------------|--|
| Module type: | AO2 |
| No of channels: | 2 |
| Current output: | -0.1 to 20.5mA; 10V dc max. Compliance with total burden less than 500Ω |
| Resolution: | Better than 1 part in 10,000 (1uA typical) |
| Voltage output: | -0.1V to 10.1V dc; 20mA max. compliance with total load greater than 550Ω -0.3 to 10.3 V dc; 8mA max. compliance with total load greater than 1500Ω |
| Resolution: | Better than 1 part in 10,000 (0.5mV typical) |
| System isolation: | 300V RMS or dc (double isolation) |
| Channel isolation: | 300V RMS or dc (basic isolation) |
| Power consumption: | 2.2W maximum |
| Calibration accuracy: | Better than 0.1% of reading |

DI16 – Sixteen Channel Analog Input



This digital input module accepts sixteen inputs and can be wired either for voltage input or for contact closure.

| | |
|----------------------------------|---|
| Module type: | DI16 |
| No of channels: | 16 |
| System isolation: | 300V RMS or dc (double insulation) |
| Channel isolation: | Channels share a common connection ('C') |
| Power consumption: | Logic: 0.75W maximum Contact: 2.0W maximum |
| Max. voltage across any channel: | 30V dc |

'Contact' Mode

Module Internal Isolated

| | |
|-------------------|---|
| Power supply (P): | 16 to 18V dc |
| Contact closure: | ON state: Input resistance threshold <1KΩ typical OFF state: Input resistance threshold >7KΩ typical |
| Wetting current: | >4mA |
| Wetting voltage: | >12V dc |

'Logic' Mode

| | |
|----------------|---|
| Logic inputs: | ON state: Input voltage threshold >10.8V dc, 30V maximum OFF state: Input voltage threshold <5.0V dc, -30V minimum |
| Input current: | 3.8mA @ 12V dc; 2.8mA @ 24V dc |

RLY8 – Eighth Channel Relay Output



This module provides eight relay outputs. These outputs may require external snubber circuits (application dependent).

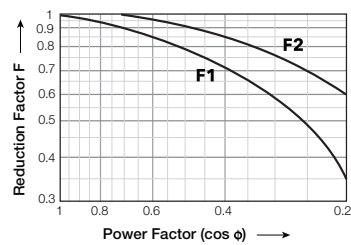
| | |
|---------------------|--|
| Module type: | RLY8 |
| No of channels: | 8 normally open, AgCdO contacts for best operating life |
| Max current rating: | 2A at up to 240V ac; 0.5A at 200V dc, increasing to 2A at 50V dc (resistive) |
| Min rating: | 100mA at 12V |
| System isolation: | 300V RMS or dc (double insulation) |
| Channel isolation: | 300V RMS or dc (basic insulation) |
| Contact life: | >10 million operations @ 240V ac, 1A rms >600,000 operations @ 240V ac, 2A rms |
| Mechanical life: | >30 million operations |
| De-rating: | The above ratings summarise the performance with resistive loads. With complex loads further de-rating may be required |
| Power consumption: | 2.5W |

Relay De-rating

AC Voltage

As the AC load becomes more “difficult” a more significant de-rating factor is required. The graph below shows the derating to be applied in terms of contact life, assuming the load requirement is predefined.

Reduction factor for inductive ac loads



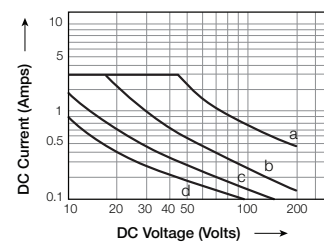
F1 = worst case
F2 = typical

Contact life = resistive contact life x reduction factor

DC voltage

DC operation is also limited for difficult loads, particularly where there is significant inductance. Here the working current must be limited as shown where the load time constant (L/R, in ms) is the significant factor.

Max dc load breaking capacity



a = resistive
b = 20ms
c = 40ms
d = 60ms

Order codes

| | | | | | | | | | | | | | |
|--------------|-----------|-----------|------------|----|-------------|----|----|----|----|----|----|----|----|
| VERSADAC | 1 RXX | 2 | 3 | 4 | 5 | 6 | 7 | 8 | 9 | 10 | 11 | 12 | 13 |
| 14 | 15 | 16 | 17 | 18 | 19 XXXXX | 20 | 21 | 22 | 23 | 24 | 25 | 26 | 27 |
| 28 XXXXXX | 29 ENG | 30 XXX | 31 LITE | | | | | | | | | | |

| Basic Product | |
|---------------|------------------------|
| VERSADAC | Scalable Data Recorder |

| 1 Type | |
|--------|-----------|
| RXX | Recording |

| 2 Base Size | |
|-------------|----------------------------|
| 00 | 0 Way base (0 I/O slots) |
| 04 | 4 Way base (4 I/O slots) |
| 08 | 8 Way base (8 I/O slots) |
| 16 | 16 Way base (16 I/O slots) |

| 3-18 Slot 1-16 | |
|----------------|---|
| XX | Not Fitted |
| A12-DC | 2 channel – isolated mV, V, RTD input module |
| A12-TC | 2 channel – isolated thermocouple, mV, input module with CJC |
| A12-MA | 2 channel – isolated mA input module – (5Ω shunt fitted) |
| A13 | 3 channel – isolated 4-20mA analogue input module with 24V Tx PSU |
| A14-TC | 4 channel – TC modules – isolated in pairs, with CJC |
| A14-MA | 4 channel – mA module – isolated in pairs |
| A14-MV | 4 channel – mV module – isolated in pairs |
| A18-RT | 4 channel – isolated RTD input module |
| A18-TC | 8 channel TC with CJC (isolated in pairs) |
| A18-MA | 8 channel mA input module (isolated in pairs) |
| AO2 | 2 channel – isolated DC (V or mA) output module |
| DI16 | 16 channel – digital input module |
| RLY8 | 8 channel – relay output module |

| 19 Future | |
|-----------|--|
| XXXXXX | |

| 20 Number of Groups | |
|---------------------|--------------------|
| 06 | 6 Groups (default) |
| 12 | 12 Groups |
| 18 | 18 Groups |
| 24 | 24 Groups |
| 30 | 30 Groups |

| 21 Virtual Channels | |
|---------------------|--|
| NOVC | None |
| 128VC | 128 Virtual Channels (Maths/Totalisers/Counters) |
| 250VC | 250 Virtual Channels |

| 22 Batch | |
|----------|---------------|
| NOBTCH | None |
| BATCH | Batch enabled |

| 23 Auditor | |
|------------|----------------------------|
| NOADT | None |
| ALITE | Auditor LITE (Audit Trail) |
| AFULL | Auditor Full |

| 24 Security Manager | |
|---------------------|---|
| NOSM | None Fitted |
| SECMAN | Security manager incl. Active directory |

| 25 Application Blocks | |
|-----------------------|--|
| XX | None |
| ST | Steriliser (2 instances) |
| RH | Relative Humidity (2 instances) |
| MK | MKT (Mean Kinetic Temperature), one instance per Group |
| SF | Steam Flow (2 instances) |

| 26 Communications Protocols | |
|-----------------------------|---------------------------------|
| TS | Modbus TCP/RTU Slave (Default) |
| TM | Modbus TCP/RTU Master |
| ES | EtherNet/IP Client/Server |
| TE | Modbus TCP Master & EtherNet/IP |

| 27 Toolkit Blocks | |
|-------------------|----------------------|
| NONE | None (Default) |
| BASIC | Basic Toolkit blocks |

| 28 Future | |
|-----------|--|
| XXXXXX | |

| 29 Operating Language | |
|-----------------------|-------------------|
| ENG | English (Default) |

| 30 OEM Security | |
|-----------------|------|
| XXX | None |

| 31 WebServer | |
|--------------|---------|
| LITE | Default |

Eurotherm Limited
 Faraday Close, Durrington,
 Worthing, West Sussex, BN13 3PL
 Phone: +44 (01903) 268500
 Fax: +44 (01903) 265982
www.eurotherm.com/worldwide



Scan for local contacts

Eurotherm by Schneider Electric, the Eurotherm logo, Chessell, EurothermSuite, Mini8, Eyon, Eyris, EPower, EPack, nanodac, piccolo, versadac, optivis, Foxboro and Wonderware are trademarks of Schneider Electric, its subsidiaries and affiliates. All other brands may be trademarks of their respective owners.

All rights are strictly reserved. No part of this document may be reproduced, modified, or transmitted in any form by any means, nor may it be stored in a retrieval system other than for the purpose to act as an aid in operating the equipment to which the document relates, without the prior written permission of Eurotherm Limited.

Eurotherm Limited pursues a policy of continuous development and product improvement. The specifications in this document may therefore be changed without notice. The information in this document is given in good faith, but is intended for guidance only.

Eurotherm Limited will accept no responsibility for any losses arising from errors in this document.

