



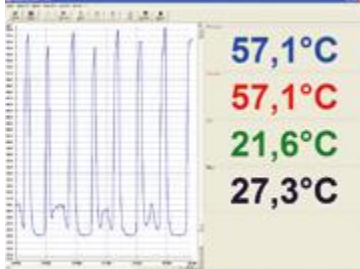
Optris Compact Connect Software

The real time software Optris Compact Connect allows simple and fast parameterization of the fixed infrared thermometers for the compact and high performance series for documentation of the temperature data. The following applications are available:

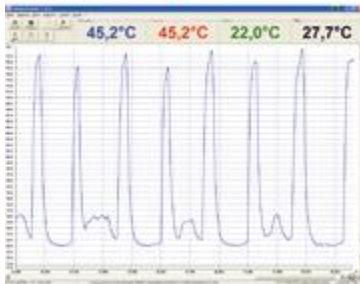
- No limitation in licensing.
- Customer specific software adjustments.
- Complete device parameterization.
- Temperature display and recording.
- Automatic process control.
- Temperature data analysis and documentation.

The software Optris Compact Connect is compatible with all netbooks, notebooks and PC systems via Windows XP, Windows Vista, Windows 7, 8 and 10.

Optris Compact Connect



The **licence-free temperature analysis software Optris Compact Connect** allows simple and fast parameterization of the compact and the high performance series' fixed infrared thermometers. It further serves the **analysis and documentation of temperature measurement values**, thus optimizing **process control**.



The modern software with its intuitive user interface enables the data display of multiple sensors in different windows. Additionally, the temperature information can easily be saved in Excel or MS Word for further actions.

Regarding the infrared thermometers [optris CT](#) and [optris CT laser](#), up to eight different emissivity values of different materials may be entered with their corresponding alarm levels, enabling the simultaneous monitoring of several processes.

In case the software does not meet your expectations, we are glad to help you with individual adjustments.

The Optris Compact Connect software is compatible with all netbooks, notebooks and computers using either Windows XP, Windows Vista, Windows 7, 8 or 10.

The software's advantages at one glance

- No additional costs
- No restrictions in licencing



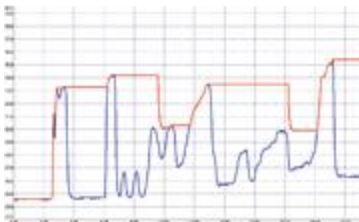
- Modern software with intuitive user interface
- Complete parameterization of sensors via software
- Data display of multiple sensors in different windows

Temperature data analysis and documentation

Time	T0b	T1a	T1b	T2a	T2b	T3a	T3b	ATTenuation
00:00:00	25.0	27.0	0	22.0	0	0	0	0
00:00:05	25.0	27.0	0	22.0	0	0	0	0
00:00:10	25.0	27.0	0	22.0	0	0	0	0
00:00:15	25.0	27.0	0	22.0	0	0	0	0
00:00:20	25.0	27.0	0	22.0	0	0	0	0
00:00:25	25.0	27.0	0	22.0	0	0	0	0
00:00:30	25.0	27.0	0	22.0	0	0	0	0
00:00:35	25.0	27.0	0	22.0	0	0	0	0
00:00:40	25.0	27.0	0	22.0	0	0	0	0
00:00:45	25.0	27.0	0	22.0	0	0	0	0
00:00:50	25.0	27.0	0	22.0	0	0	0	0
00:00:55	25.0	27.0	0	22.0	0	0	0	0
00:01:00	25.0	27.0	0	22.0	0	0	0	0
00:01:05	25.0	27.0	0	22.0	0	0	0	0
00:01:10	25.0	27.0	0	22.0	0	0	0	0
00:01:15	25.0	27.0	0	22.0	0	0	0	0
00:01:20	25.0	27.0	0	22.0	0	0	0	0
00:01:25	25.0	27.0	0	22.0	0	0	0	0
00:01:30	25.0	27.0	0	22.0	0	0	0	0
00:01:35	25.0	27.0	0	22.0	0	0	0	0
00:01:40	25.0	27.0	0	22.0	0	0	0	0
00:01:45	25.0	27.0	0	22.0	0	0	0	0
00:01:50	25.0	27.0	0	22.0	0	0	0	0
00:01:55	25.0	27.0	0	22.0	0	0	0	0
00:02:00	25.0	27.0	0	22.0	0	0	0	0
00:02:05	25.0	27.0	0	22.0	0	0	0	0
00:02:10	25.0	27.0	0	22.0	0	0	0	0
00:02:15	25.0	27.0	0	22.0	0	0	0	0
00:02:20	25.0	27.0	0	22.0	0	0	0	0
00:02:25	25.0	27.0	0	22.0	0	0	0	0
00:02:30	25.0	27.0	0	22.0	0	0	0	0
00:02:35	25.0	27.0	0	22.0	0	0	0	0
00:02:40	25.0	27.0	0	22.0	0	0	0	0
00:02:45	25.0	27.0	0	22.0	0	0	0	0
00:02:50	25.0	27.0	0	22.0	0	0	0	0
00:02:55	25.0	27.0	0	22.0	0	0	0	0
00:03:00	25.0	27.0	0	22.0	0	0	0	0
00:03:05	25.0	27.0	0	22.0	0	0	0	0
00:03:10	25.0	27.0	0	22.0	0	0	0	0
00:03:15	25.0	27.0	0	22.0	0	0	0	0
00:03:20	25.0	27.0	0	22.0	0	0	0	0
00:03:25	25.0	27.0	0	22.0	0	0	0	0
00:03:30	25.0	27.0	0	22.0	0	0	0	0
00:03:35	25.0	27.0	0	22.0	0	0	0	0
00:03:40	25.0	27.0	0	22.0	0	0	0	0
00:03:45	25.0	27.0	0	22.0	0	0	0	0
00:03:50	25.0	27.0	0	22.0	0	0	0	0
00:03:55	25.0	27.0	0	22.0	0	0	0	0
00:04:00	25.0	27.0	0	22.0	0	0	0	0

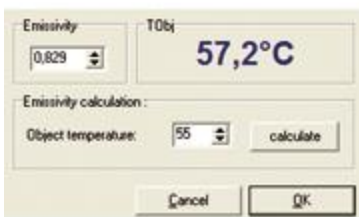
- Detailed analysis of temperature-time diagram
- Temperature data can be saved in Excel for further processing
- Diagram window can be saved to clipboard for further use in standard programs such as MS Word

Automatic process control



- Triggered data collection
- Individual setup of alarm levels depending on the process
- Definition of different analog and digital signal outputs (depending on the chosen intersection)
- [optris CT](#) / [optris CTlaser](#): Input of up to eight different emissivity values of different materials with corresponding alarm levels

Customer specific software adjustments





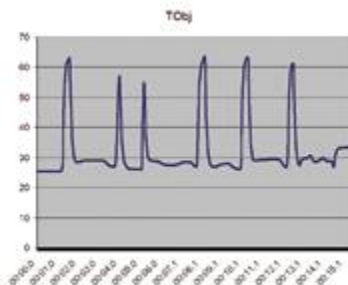
- Various language options including a translation tool
- Temperature display in °C oder °F
- Adjustment of layouts
- Loading and saving of measurement parameter settings for the specific application
- Starting of different software stages to display multiple sensors
- Locking of programming keys at CT electronic

Complete parameterization of the device



- Setup of all measurement parameters (emissivity, offset corrections, alarm)
- Possibility to compensate surrounding temperature
- Measurement simulation during setup of device via the sensor's output without actual surface temperature measurement
- Automatic determination of unknown emissivity in case of available object temperature

Temperature display and recording



- Presentation of temperature values as temperature-time diagram as well as digital display
- Real-time display of temperature data while processing (ratio, minimum and maximum value)
- Automatic or manual scale adjustment of diagram for best display of measurement values
- Data recording for detailed analysis and documentation later on