

# USB CPI Clip Driver Download

<http://www.eurotherm.co.uk/en-gb/usbcp/>

**invenSYS**  
Eurotherm

You are here » Home » USB CPI clip [Contact us](#) or call us on 01903 268500

**USB CPI Clip Driver Download**

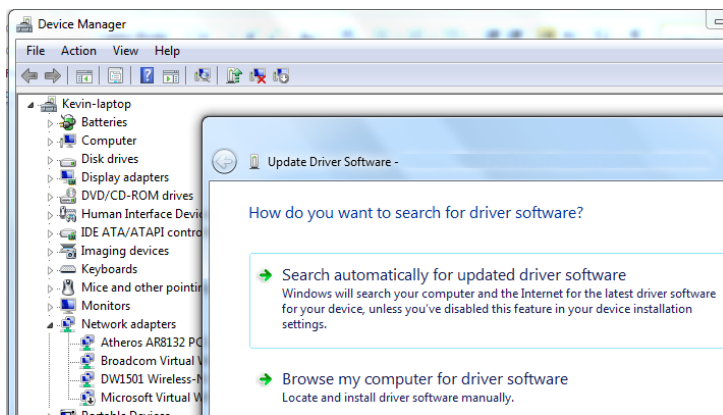
To download the driver visit [www.ftdichip.com/Drivers/VCP.htm](http://www.ftdichip.com/Drivers/VCP.htm)  
Note: FTDI drivers may be distributed in any form as long as license information is not modified.

If you are running Windows XP you may also require the accompanying Windows driver from the following link:  
[www.ftdichip.com/Drivers/CDM/CDM%202.08.28%20WHQL%20Certified.zip](http://www.ftdichip.com/Drivers/CDM/CDM%202.08.28%20WHQL%20Certified.zip)

[Download USB CPI Clip User Manual](#)

You have two file installation options:

- 1) Executable file (the link on the right)
- 2) Driver update file that is access from the computers Device Manager driver software update (the left link)



**VCP Drivers**  
Virtual COM port (VCP) drivers cause the USB device to appear as an additional COM port available to the PC. Application software can access the USB device in the same way as it would access a standard COM port.

**Browse to file (Update driver software)**

**executable (\*.exe file)**

Currently Supported VCP Drivers:

Operating System	Release Date	Processor Architecture							Comments
		x86 (32-bit)	x64 (64-bit)	PPC	ARM	MIPSII	MIPSIV	SH4	
Windows	2014-02-21	<a href="#">2.10.00</a>	<a href="#">2.10.00</a>	-	-	-	-	-	2.10.00 WHQL Certified Available as <a href="#">setup executable</a> <a href="#">Release Notes</a>
Linux	2009-05-14	1.5.0	1.5.0	-	-	-	-	-	All FTDI devices now supported in Ubuntu 11.10, kernel 3.0.0-19 Refer to <a href="#">TN-101</a> if you need a custom VCP VID/PID in Linux
Mac OS X	2012-08-10	<a href="#">2.2.18</a>	<a href="#">2.2.18</a>	<a href="#">2.2.18</a>	-	-	-	-	Refer to <a href="#">TN-105</a> if you need a custom VCP VID/PID in MAC OS
Windows CE 4.2-5.2**	2012-01-06	1.1.0.20	-	-	1.1.0.20	1.1.0.10	1.1.0.10	1.1.0.10	
Windows CE 6.0	2012-01-06	1.1.0.20	-	-	1.1.0.20	1.1.0.10	1.1.0.10	1.1.0.10	